

Test Report

No. CANEC1609228303

Date: 25 May 2016

Page 1 of 7

ZHONGSHAN JINHAO CHEMICAL ENGINEERING CO.,LTD.

SHENGHUI NORTH INDUSTRIAL PARK,NANTOU TOWN,ZHONGSHAN CITY GUANGDONG PROVINCE

The following sample(s) was/were submitted and identified on behalf of the clients as : Non cohesive coating

SGS Job No. : CP16-030687 - GZ

Model No. : JH.O-2303A

Client Ref. Info. : SEE REMARK

Date of Sample Received : 19 May 2016

Testing Period : 19 May 2016 - 24 May 2016

Test Requested : Selected test(s) as requested by client.

Test Method : Please refer to next page(s).

Test Results : Please refer to next page(s).

Conclusion : Based on the performed tests on selected part of submitted sample(s), the results of Cadmium, Lead, Mercury, Hexavalent chromium, Polybrominated biphenyls (PBBs), Polybrominated diphenyl ethers (PBDEs) do not exceed the limits as set by RoHS Directive (EU) 2015/863 amending Annex II to Directive 2011/65/EU.

Signed for and on behalf of
SGS-CSTC Standards Technical Services Co., Ltd. Guangzhou Branch

Merry

Merry Lv
Approved Signatory



Unless otherwise agreed in writing, this document is issued by the Company subject to its General Conditions of Service printed overleaf, available on request or accessible at <http://www.sgs.com/en/Terms-and-Conditions.aspx> and, for electronic format documents, subject to Terms and Conditions for Electronic Documents at <http://www.sgs.com/en/Terms-and-Conditions/Terms-e-Documents.aspx>. Attention is drawn to the limitation of liability, indemnification and jurisdiction issues defined therein. Any holder of this document is advised that information contained hereon reflects the Company's findings at the time of its intervention only and within the limits of Client's instructions, if any. The Company's sole responsibility is to its Client and this document does not exonerate parties to a transaction from exercising all their rights and obligations under the transaction documents. This document cannot be reproduced except in full, without prior written approval of the Company. Any unauthorized alteration, forgery or falsification of the content or appearance of this document is unlawful and offenders may be prosecuted to the fullest extent of the law. Unless otherwise stated the results shown in this test report refer only to the sample(s) tested.

Attention: To check the authenticity of testing /inspection report & certificate, please contact us at telephone: (86-755) 8307 1443, or email: CN.Doccheck@sgs.com

198 Kezhu Road, Science Park Guangzhou Economic & Technology Development District, Guangzhou, China 510663 t (86-20) 82155555 f (86-20) 82075113 www.sgsgroup.com.cn
中国·广州·经济技术开发区科学城科珠路198号 邮编: 510663 t (86-20) 82155555 f (86-20) 82075113 e sgs.china@sgs.com

Test Report

No. CANEC1609228303

Date: 25 May 2016

Page 2 of 7

Test Results :

Test Part Description :

| Specimen No. | SGS Sample ID | Description |
|--------------|------------------|------------------------|
| SN1 | CAN16-092283.001 | Black coating on metal |

Remarks :

- (1) 1 mg/kg = 0.0001%
- (2) MDL = Method Detection Limit
- (3) ND = Not Detected (< MDL)
- (4) "-" = Not Regulated

RoHS Directive (EU) 2015/863 amending Annex II to Directive 2011/65/EU

- Test Method :
- (1)With reference to IEC 62321-5:2013, determination of Cadmium by ICP-OES.
 - (2)With reference to IEC 62321-5:2013, determination of Lead by ICP-OES.
 - (3)With reference to IEC 62321-4:2013, determination of Mercury by ICP-OES.
 - (4)With reference to IEC 62321:2008, determination of Hexavalent Chromium by Colorimetric Method using UV-Vis.
 - (5)With reference to IEC 62321-6:2015, determination of PBBs and PBDEs by GC-MS.

| Test Item(s) | Limit | Unit | MDL | 001 |
|----------------------------|-------|-------|-----|-----|
| Cadmium (Cd) | 100 | mg/kg | 2 | ND |
| Lead (Pb) | 1,000 | mg/kg | 2 | ND |
| Mercury (Hg) | 1,000 | mg/kg | 2 | ND |
| Hexavalent Chromium (CrVI) | 1,000 | mg/kg | 2 | 5 |
| Sum of PBBs | 1,000 | mg/kg | - | ND |
| Monobromobiphenyl | - | mg/kg | 5 | ND |
| Dibromobiphenyl | - | mg/kg | 5 | ND |
| Tribromobiphenyl | - | mg/kg | 5 | ND |
| Tetrabromobiphenyl | - | mg/kg | 5 | ND |
| Pentabromobiphenyl | - | mg/kg | 5 | ND |
| Hexabromobiphenyl | - | mg/kg | 5 | ND |
| Heptabromobiphenyl | - | mg/kg | 5 | ND |
| Octabromobiphenyl | - | mg/kg | 5 | ND |
| Nonabromobiphenyl | - | mg/kg | 5 | ND |
| Decabromobiphenyl | - | mg/kg | 5 | ND |
| Sum of PBDEs | 1,000 | mg/kg | - | ND |
| Monobromodiphenyl ether | - | mg/kg | 5 | ND |



SGS-CSTC Standards Technical Services Co., Ltd.
Guangzhou Branch Testing Chemical Laboratory

Unless otherwise agreed in writing, this document is issued by the Company subject to its General Conditions of Service printed overleaf, available on request or accessible at <http://www.sgs.com/en/Terms-and-Conditions.aspx> and, for electronic format documents, subject to Terms and Conditions for Electronic Documents at <http://www.sgs.com/en/Terms-and-Conditions/Terms-e-Documents.aspx>. Attention is drawn to the limitation of liability, indemnification and jurisdiction issues defined therein. Any holder of this document is advised that information contained hereon reflects the Company's findings at the time of its intervention only and within the limits of Client's instructions, if any. The Company's sole responsibility is to its Client and this document does not exonerate parties to a transaction from exercising all their rights and obligations under the transaction documents. This document cannot be reproduced except in full, without prior written approval of the Company. Any unauthorized alteration, forgery or falsification of the content or appearance of this document is unlawful and offenders may be prosecuted to the fullest extent of the law. Unless otherwise stated the results shown in this test report refer only to the sample(s) tested.

Attention: To check the authenticity of testing /inspection report & certificate, please contact us at telephone: (86-755) 8307 1443, or email: CN.Doccheck@sgs.com

198 Kezhu Road, Science Park Guangzhou Economic & Technology Development District, Guangzhou, China 510663 t (86-20) 82155555 f (86-20) 82075113 www.sgsgroup.com.cn
中国·广州·经济技术开发区科学城科珠路198号 邮编: 510663 t (86-20) 82155555 f (86-20) 82075113 e sgs.china@sgs.com

Test Report

No. CANEC1609228303

Date: 25 May 2016

Page 3 of 7

| <u>Test Item(s)</u> | <u>Limit</u> | <u>Unit</u> | <u>MDL</u> | <u>001</u> |
|--------------------------|--------------|-------------|------------|------------|
| Dibromodiphenyl ether | - | mg/kg | 5 | ND |
| Tribromodiphenyl ether | - | mg/kg | 5 | ND |
| Tetrabromodiphenyl ether | - | mg/kg | 5 | ND |
| Pentabromodiphenyl ether | - | mg/kg | 5 | ND |
| Hexabromodiphenyl ether | - | mg/kg | 5 | ND |
| Heptabromodiphenyl ether | - | mg/kg | 5 | ND |
| Octabromodiphenyl ether | - | mg/kg | 5 | ND |
| Nonabromodiphenyl ether | - | mg/kg | 5 | ND |
| Decabromodiphenyl ether | - | mg/kg | 5 | ND |

Notes :

- (1) The maximum permissible limit is quoted from RoHS Directive (EU) 2015/863.
- (2) On 4 June 2015, Commission Directive (EU) 2015/863 was published in the Official Journal of the European Union (OJEU) to include the phthalates BBP, DBP, DEHP and DIBP into ANNEX II of the Rohs Recast Directive. The new law restricts each phthalate to no more than 0.1% in each homogeneous material of an electrical product.
- (3) The restriction of DEHP, BBP, DBP and DIBP shall apply to medical devices, including in vitro medical devices, and monitoring and control instruments, including industrial monitoring and control instruments, from 22 July 2021.
- (4) The restriction of DEHP, BBP, DBP and DIBP shall not apply to cables or spare parts for the repair, the reuse, the updating of functionalities or upgrading of capacity of EEE placed on the market before 22 July 2019, and of medical devices, including in vitro medical devices, and monitoring and control instruments, including industrial monitoring and control instruments, placed on the market before 22 July 2021.
- (5) The restriction of DEHP, BBP and DBP shall not apply to toys which are already subject to the restriction of DEHP, BBP and DBP through entry 51 of Annex XVII to Regulation (EC) No 1907/2006.'

Remark: Results & photo(s) of this report refer to test report CANEC1609228301.



Unless otherwise agreed in writing, this document is issued by the Company subject to its General Conditions of Service printed overleaf, available on request or accessible at <http://www.sgs.com/en/Terms-and-Conditions.aspx> and, for electronic format documents, subject to Terms and Conditions for Electronic Documents at <http://www.sgs.com/en/Terms-and-Conditions/Terms-e-Documents.aspx>. Attention is drawn to the limitation of liability, indemnification and jurisdiction issues defined therein. Any holder of this document is advised that information contained hereon reflects the Company's findings at the time of its intervention only and within the limits of Client's instructions, if any. The Company's sole responsibility is to its Client and this document does not exonerate parties to a transaction from exercising all their rights and obligations under the transaction documents. This document cannot be reproduced except in full, without prior written approval of the Company. Any unauthorized alteration, forgery or falsification of the content or appearance of this document is unlawful and offenders may be prosecuted to the fullest extent of the law. Unless otherwise stated the results shown in this test report refer only to the sample(s) tested.

Attention: To check the authenticity of testing / inspection report & certificate, please contact us at telephone: (86-755) 8307 1443, or email: CN.Doccheck@sgs.com

198 Kezhu Road, Science Park Guangzhou Economic & Technology Development District, Guangzhou, China 510663 t (86-20) 82155555 f (86-20) 82075113 www.sgsgroup.com.cn
 中国·广州·经济技术开发区科学城科珠路198号 邮编: 510663 t (86-20) 82155555 f (86-20) 82075113 e sgs.china@sgs.com

Test Report

No. CANEC1609228303

Date: 25 May 2016

Page 4 of 7

REMARK:

JH.O-2303A JH.O-2303A-1 JH.O-2303A-2 JH.O-2303A-3 JH.O-2303A-4 JH.O-2303A-5 JH.O-2303A-6
 JH.O-2303A-7 JH.O-2303A-8 JH.O-2303A-9 JH.O-2303A-10 JH.O-2303A-11 JH.O-2303A-12
 JH.O-2303A-13 JH.O-2303A-14 JH.O-2303A-15 JH.O-2303A-16 JH.O-2303A-17 JH.O-2303A-18
 JH.O-2303A-19 JH.O-2303A-20 JH.O-2303A-21 JH.O-2303A-22 JH.O-2303A-23 JH.O-2303A-24
 JH.O-2303A-25 JH.O-2303A-26 JH.O-2303A-27 JH.O-2303A-28 JH.O-2303A-29 JH.O-2303A-30
 JH.O-2303B JH.O-2303B-1 JH.O-2303B-2 JH.O-2303B-3 JH.O-2303B-4 JH.O-2303B-5 JH.O-2303B-6
 JH.O-2303B-7 JH.O-2303B-8 JH.O-2303B-9 JH.O-2303B-10 JH.O-2303B-11 JH.O-2303B-12
 JH.O-2303B-13 JH.O-2303B-14 JH.O-2303B-15 JH.O-2303B-16 JH.O-2303B-17 JH.O-2303B-18
 JH.O-2303B-19 JH.O-2303B-20 JH.O-2303B-21 JH.O-2303B-22 JH.O-2303B-23 JH.O-2303B-24
 JH.O-2303B-25 JH.O-2303B-26 JH.O-2303B-27 JH.O-2303B-28 JH.O-2303B-29 JH.O-2303B-30
 JH.O-2303B-31 JH.O-2303B-32 JH.O-2303B-33 JH.O-2303B-34 JH.O-2303B-35 JH.O-2303B-36
 JH.O-2303JB-37 JH.O-2303B-38 JH.O-2303B-39 JH.O-2303B-40 JH.O-2303JB-41 JH.O-2303B-42
 JH.O-2303B-43 JH.O-2303B-44 JH.O-2303JB-45 JH.O-2303B-46 JH.O-2303B-47 JH.O-2303B-48
 JH.O-2303JB-49 JH.O-2303B-50 JH.O-2000 JH.O-2000-1 JH.O-2000-2 JH.O-2000-3 JH.O-2000-4
 JH.O-2000-5 JH.O-2000-6 JH.O-2000-7 JH.O-2000-8 JH.O-2000-9
 JH.O-2000-10 JH.O-2000-11 JH.O-2000-12 JH.O-2000-13 JH.O-2000-14 JH.O-2000-15 JH.O-2000-16
 JH.O-2000-17 JH.O-2000-18 JH.O-2000-19 JH.O-2000-20 JH.O-2303C JH.O-2303C-1 JH.O-2303C-2
 JH.O-2303C-3 JH.O-2303C-4 JH.O-2303C-5 JH.O-2303D JH.O-2303D-1 JH.O-2303D-2 JH.O-2303D-3
 JH.O-2303D-4 JH.O-2303D-5 JH.O-2303D-6 JH.O-2303D-7 JH.O-2303D-8 JH.O-2303D-9
 JH.O-2303D-10 JH.O-2303E JH.O-2303F JH.O-2303T JH.O-2628A JH.O-2628A-1 JH.O-2628A-2
 JH.O-2628A-3 JH.O-2628A-4 JH.O-2628A-5 JH.O-2628A-6 JH.O-2628A-7 JH.O-2628A-8 JH.O-2628A-9
 JH.O-2628A-10 JH.O-2628A-11 JH.O-2628A-12 JH.O-2628A-13 JH.O-2628A-14 JH.O-2628A-15
 JH.O-2628A-16 JH.O-2628A-17 JH.O-2628A-18 JH.O-2628A-19 JH.O-2628A-20 JH.O-2628B
 JH.O-2106A JH.O-2106A-1 JH.O-2106A-2 JH.O-2106A-3 JH.O-2106A-4 JH.O-2106A-5 JH.O-2106A-6
 JH.O-2106A-7 JH.O-2106A-8 JH.O-2106A-9 JH.O-2106A-10 JH.O-2106A-11 JH.O-2106A-12
 JH.O-2106A-13 JH.O-2106A-14 JH.O-2106A-15 JH.O-2106A-16 JH.O-2106A-17 JH.O-2106A-18
 JH.O-2106A-19 JH.O-2106A-20 JH.O-2106A-21 JH.O-2106A-22 JH.O-2106A-23 JH.O-2106A-24
 JH.O-2106A-25 JH.O-2106A-26 JH.O-2106A-27 JH.O-2106A-28 JH.O-2106A-29 JH.O-2106A-30
 JH.O-2106A-31 JH.O-2106A-32 JH.O-2106A-33 JH.O-2106A-34 JH.O-2106A-35 JH.O-2106A-36
 JH.O-2106A-37 JH.O-2106A-38 JH.O-2106A-39 JH.O-2106A-40 JH.O-2106A-41 JH.O-2106A-42
 JH.O-2106A-43 JH.O-2106A-44 JH.O-2106A-45 JH.O-2106A-46 JH.O-2106A-47 JH.O-2106A-48
 JH.O-2106A-49 JH.O-2106A-50 JH.O-2106B JH.O-2106B-1 JH.O-2106B-2 JH.O-2106B-2 JH.O-2106B-3
 JH.O-2106B-4 JH.O-2106B-5 JH.O-2106B-6 JH.O-2106B-7 JH.O-2106B-8 JH.O-2106B-9 JH.O-2106B-10
 JH.O-2501 JH.O-2501-1 JH.O-2501-2 JH.O-2501-3 JH.O-2501-4 JH.O-2501-5 JH.O-2501-6
 JH.O-2501-7 JH.O-2501-8 JH.O-2501-9 JH.O-2501-10 JH.O-2501-11 JH.O-2501-12 JH.O-2501-13
 JH.O-2501-14 JH.O-2501-15 JH.O-2501-16 JH.O-2501-17 JH.O-2501-18 JH.O-2501-19
 JH.O-2501-20 JH.O-2501-21 JH.O-2501-22 JH.O-2501-23 JH.O-2501-24 JH.O-2501-25
 JH.O-2501-26 JH.O-2501-27 JH.O-2501-28 JH.O-2501-29 JH.O-2501-30 JH.O-2501-31
 JH.O-2501-32 JH.O-2501-33 JH.O-2501-34 JH.O-2501-35 JH.O-2501-36 JH.O-2501-37
 JH.O-2501-38 JH.O-2501-39 JH.O-2501-40 JH.O-2501-41 JH.O-2501-42 JH.O-2501-43
 JH.O-2501-44 JH.O-2501-45 JH.O-2501-46 JH.O-2501-47 JH.O-2501-48 JH.O-2501-49
 JH.O-2501-50 JH.O-2501-51 JH.O-2501-52 JH.O-2501-53 JH.O-2501-54 JH.O-2501-55



SGS-CSTC Standards Technical Services Co., Ltd.
 Guangzhou Branch Testing Service Chemical Laboratory

Unless otherwise agreed in writing, this document is issued by the Company subject to its General Conditions of Service printed overleaf, available on request or accessible at <http://www.sgs.com/en/Terms-and-Conditions.aspx> and, for electronic format documents, subject to Terms and Conditions for Electronic Documents at <http://www.sgs.com/en/Terms-and-Conditions/Terms-e-Documents.aspx>. Attention is drawn to the limitation of liability, indemnification and jurisdiction issues defined therein. Any holder of this document is advised that information contained hereon reflects the Company's findings at the time of its intervention only and within the limits of Client's instructions, if any. The Company's sole responsibility is to its Client and this document does not exonerate parties to a transaction from exercising all their rights and obligations under the transaction documents. This document cannot be reproduced except in full, without prior written approval of the Company. Any unauthorized alteration, forgery or falsification of the content or appearance of this document is unlawful and offenders may be prosecuted to the fullest extent of the law. Unless otherwise stated the results shown in this test report refer only to the sample(s) tested.

Attention: To check the authenticity of testing / inspection report & certificate, please contact us at telephone: (86-755) 8307 1443, or email: CN.Doccheck@sgs.com

198 Kazhu Road, Science Park Guangzhou Economic & Technology Development District, Guangzhou, China 510663 t (86-20) 82155555 f (86-20) 82075113 www.sgs.com.cn
 中国·广州·经济技术开发区科学城科珠路198号 邮编: 510663 t (86-20) 82155555 f (86-20) 82075113 e sgs.china@sgs.com

Test Report

No. CANEC1609228303

Date: 25 May 2016

Page 5 of 7

JH.O-2501-56 JH.O-2501-57 JH.O-2501-58 JH.O-2501-59 JH.O-2501-60 JH.O-2508 JH.O-2508-1
 JH.O-2508-2 JH.O-2508-3 JH.O-2508-4 JH.O-2508-5 JH.O-2508-6 JH.O-2508-7 JH.O-2508-8
 JH.O-2508-9 JH.O-2508-10 JH.O-2303A(T) JH.O-2303A(T)-1 JH.O-2303A(T)-2 JH.O-2303A(T)-3
 JH.O-2303A(T)-4 JH.O-2303A(T)-5 JH.O-2303A(T)-6 JH.O-2303A(T)-7 JH.O-2303A(T)-8
 JH.O-2303A(T)-9 JH.O-2303A(T)-10 JH.O-2303B(T) JH.O-2303B(T)-1 JH.O-2303B(T)-2
 JH.O-2303B(T)-3 JH.O-2303B(T)-4 JH.O-2303B(T)-5 JH.O-2303B(T)-6 JH.O-2303B(T)-7
 JH.O-2303B(T)-8 JH.O-2303B(T)-9 JH.O-2303B(T)-10



Unless otherwise agreed in writing, this document is issued by the Company subject to its General Conditions of Service printed overleaf, available on request or accessible at <http://www.sgs.com/en/Terms-and-Conditions.aspx> and, for electronic format documents, subject to Terms and Conditions for Electronic Documents at <http://www.sgs.com/en/Terms-and-Conditions/Terms-e-Documents.aspx>. Attention is drawn to the limitation of liability, indemnification and jurisdiction issues defined therein. Any holder of this document is advised that information contained hereon reflects the Company's findings at the time of its intervention only and within the limits of Client's instructions, if any. The Company's sole responsibility is to its Client and this document does not exonerate parties to a transaction from exercising all their rights and obligations under the transaction documents. This document cannot be reproduced except in full, without prior written approval of the Company. Any unauthorized alteration, forgery or falsification of the content or appearance of this document is unlawful and offenders may be prosecuted to the fullest extent of the law. Unless otherwise stated the results shown in this test report refer only to the sample(s) tested.

Attention: To check the authenticity of testing / inspection report & certificate, please contact us at telephone: (86-755) 8307 1443, or email: CN.Doccheck@sgs.com

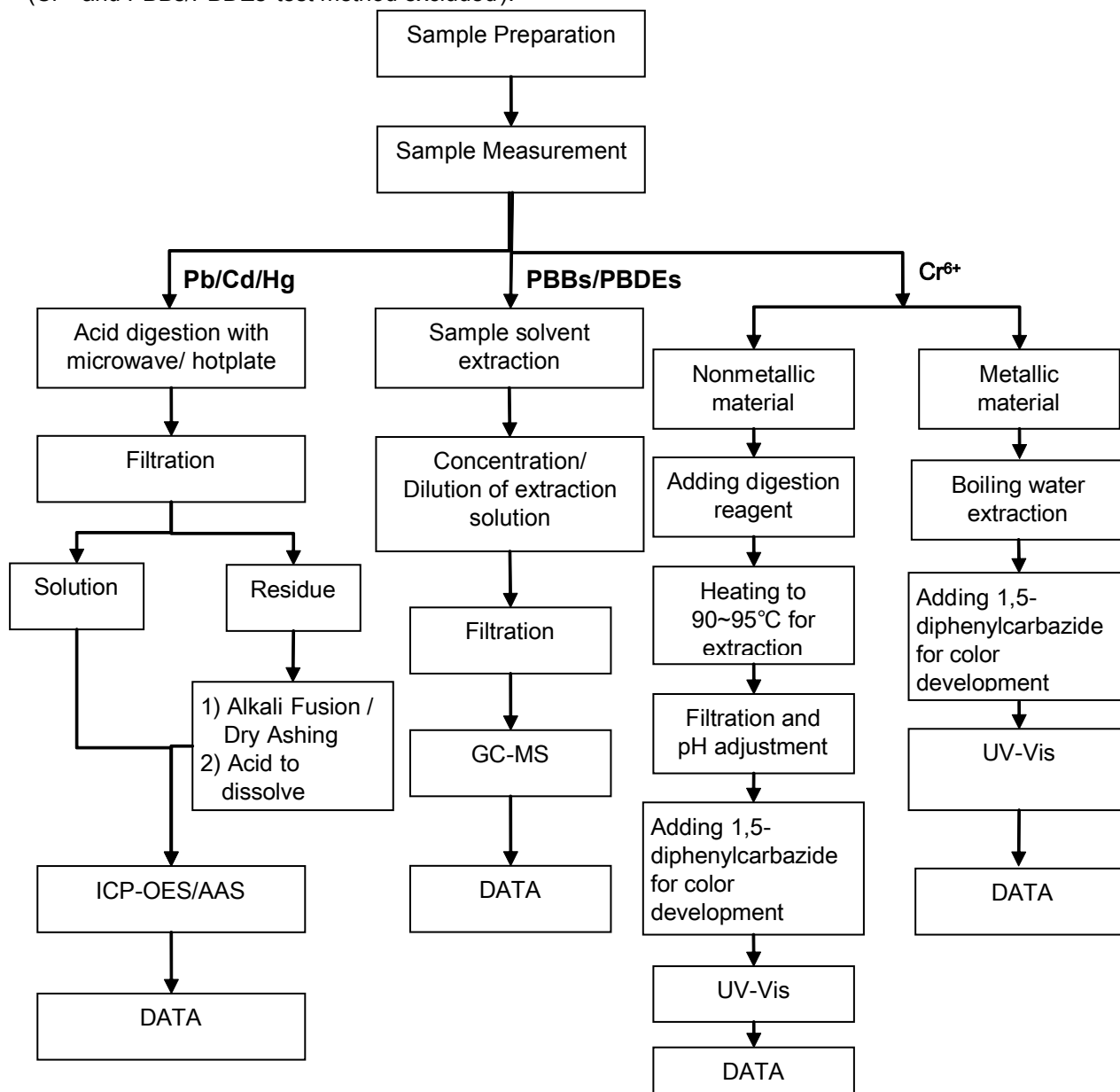
SGS-CSTC Standards Technical Services Co., Ltd.
 Guangzhou Branch Testing Chemical Laboratory

198 Kezhu Road, Science Park Guangzhou Economic & Technology Development District, Guangzhou, China 510663 t (86-20) 82155555 f (86-20) 82075113 www.sgsgroup.com.cn
 中国·广州·经济技术开发区科学城科珠路198号 邮编: 510663 t (86-20) 82155555 f (86-20) 82075113 e sgs.china@sgs.com

ATTACHMENTS

Pb/Cd/Hg/Cr⁶⁺/PBBs/PBDEs Testing Flow Chart

- 1) Name of the person who made testing: Bruce Xiao / Sunny Hu
- 2) Name of the person in charge of testing: Bella Wang / Cutey Yu
- 3) These samples were dissolved totally by pre-conditioning method according to below flow chart (Cr⁶⁺ and PBBs/PBDEs test method excluded).



Test Report

No. CANEC1609228303

Date: 25 May 2016

Page 7 of 7

Sample photo:



SGS authenticate the photo on original report only

*** End of Report ***